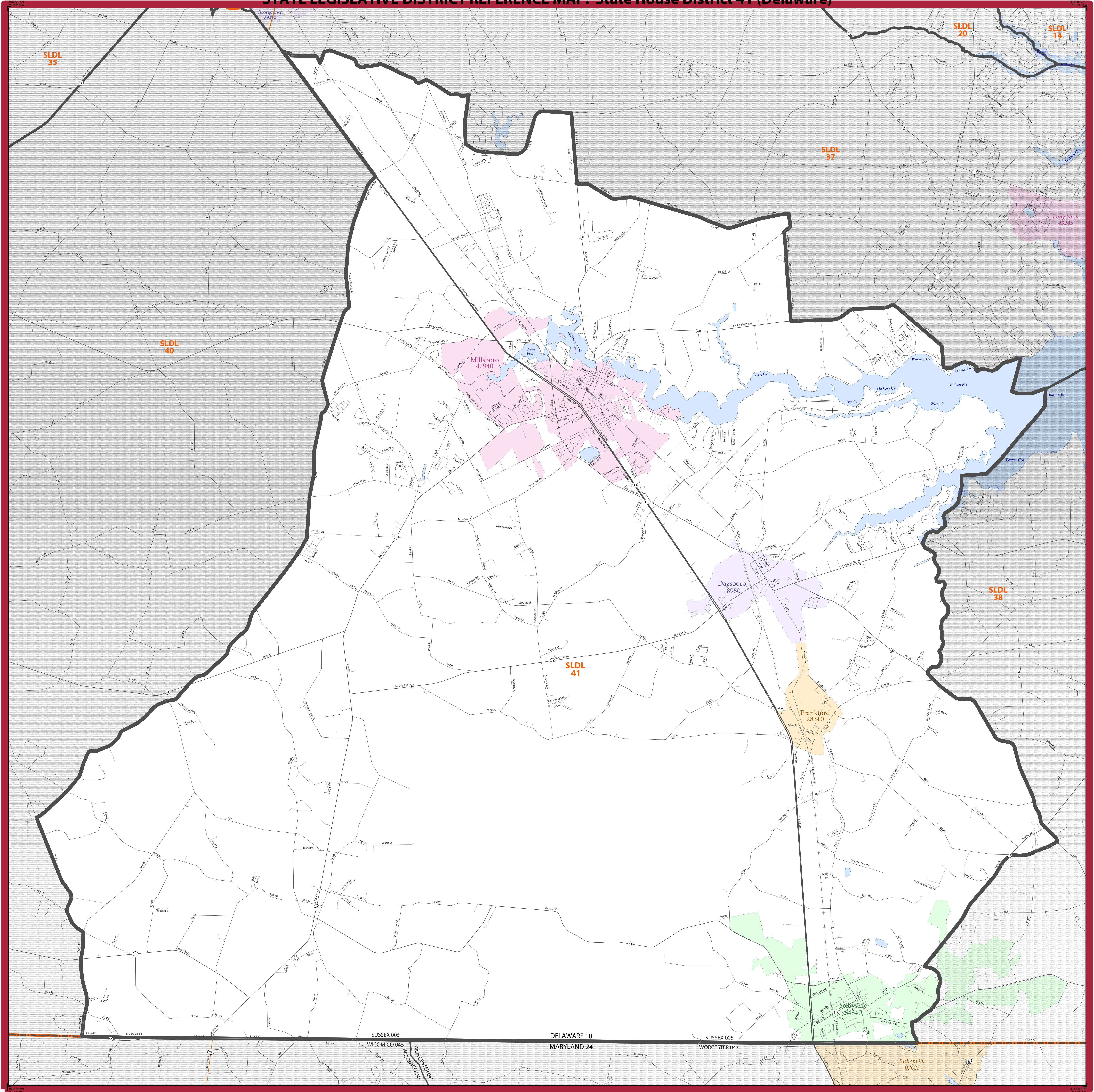


# STATE LEGISLATIVE DISTRICT REFERENCE MAP: State House District 41 (Delaware)



SYMBOL DESCRIPTION		LEGEND	
International	--- --	CANADA	
Federal American Indian Reservation	[Pattern]	L'ANSE RES 1880	
Off-Reservation Trust Land	[Pattern]	T1880	
State American Indian Reservation	[Pattern]	Tama Res 9400	
State Legislative District - Lower (House)	[Thick Line]	<b>SLDL 94</b>	
State (or statistically equivalent entity)	--- --	NEW YORK 36	
County (or statistically equivalent entity)	---	ERIE 029	
Minor Civil Division (MCD)	---	Bristol town 07485	
Consolidated City	[Pattern]	MILFORD 47500	
Incorporated Place <sup>2</sup>	[Color]	Davis 18100	
Census Designated Place (CDP) <sup>2</sup>	[Color]	Incline Village 35100	
<b>DESCRIPTION</b>		<b>SYMBOL</b>	
Instream	[Symbol]	Water Body	[Symbol]
U.S. Highway	[Symbol]	Outside Subject Area	[Symbol]
State Highway	[Symbol]		
Other Road	[Symbol]		
Railroad	[Symbol]		

Where international, state, county, and/or MCD boundaries coincide, the map shows the boundary symbol for only the highest-ranking of these boundaries.

1 MCD boundaries are shown in the following states in which some or all MCDs function as general-purpose governmental units: Connecticut, Illinois, Indiana, Kansas, Maine, Massachusetts, Michigan, Minnesota, Missouri, Nebraska, New Hampshire, New Jersey, New York, North Dakota, Ohio, Pennsylvania, Rhode Island, South Dakota, Vermont, and Wisconsin. (Note that Illinois and Nebraska have some counties covered by nongovernmental precincts and Missouri and Nebraska have some counties covered by nongovernmental townships.)

2 Place label color corresponds to the place fill color.  
Label colors: Davis Davis Davis Davis Davis

State legislative districts are delineated based on the results from the 2010 Decennial Census, all other legal boundaries and names are as of January 1, 2010. The boundaries shown on this map are for Census Bureau statistical data collection and tabulation purposes only; their depiction and designation for statistical purposes does not constitute a determination of jurisdictional authority or rights of ownership or entitlement.

Geographic Vintage: 2010 Census (reference date: January 1, 2010)  
Data Source: U.S. Census Bureau's MAINTIGER database (BAS13)  
Map Created by: Geography Division: May 19, 2013

U.S. DEPARTMENT OF COMMERCE Economics and Statistics Administration U.S. Census Bureau

Projection: Albers Equal Area Conic  
Datum: NAD83  
Spheroid: GRS 80  
1st Standard Parallel: 39 40 56  
2nd Standard Parallel: 39 36 27  
Central Meridian: 75 23 12  
Latitude of Projection's Origin: 38 27 03  
False Easting: 0  
False Northing: 0

The plotted map scale is 1:34669

0 0.5 1 1.5 2 2.5 3 3.5 4 Kilometers  
0 0.5 1 1.5 2 2.5 3 3.5 4 Miles

PARENT SHEET 1  
Total Sheets: 1  
Index Sheets: 0  
Parent Sheets: 1

United States Census Bureau

NAME: State House District 41  
ENTITY TYPE: State Legislative District - Lower (House)  
ENTITY CODE: 041  
ST: Delaware (10)  
COU: Sussex (005)

SLDL REF MAP (PART 1)  
25101041001